

2125 Hilltop Place

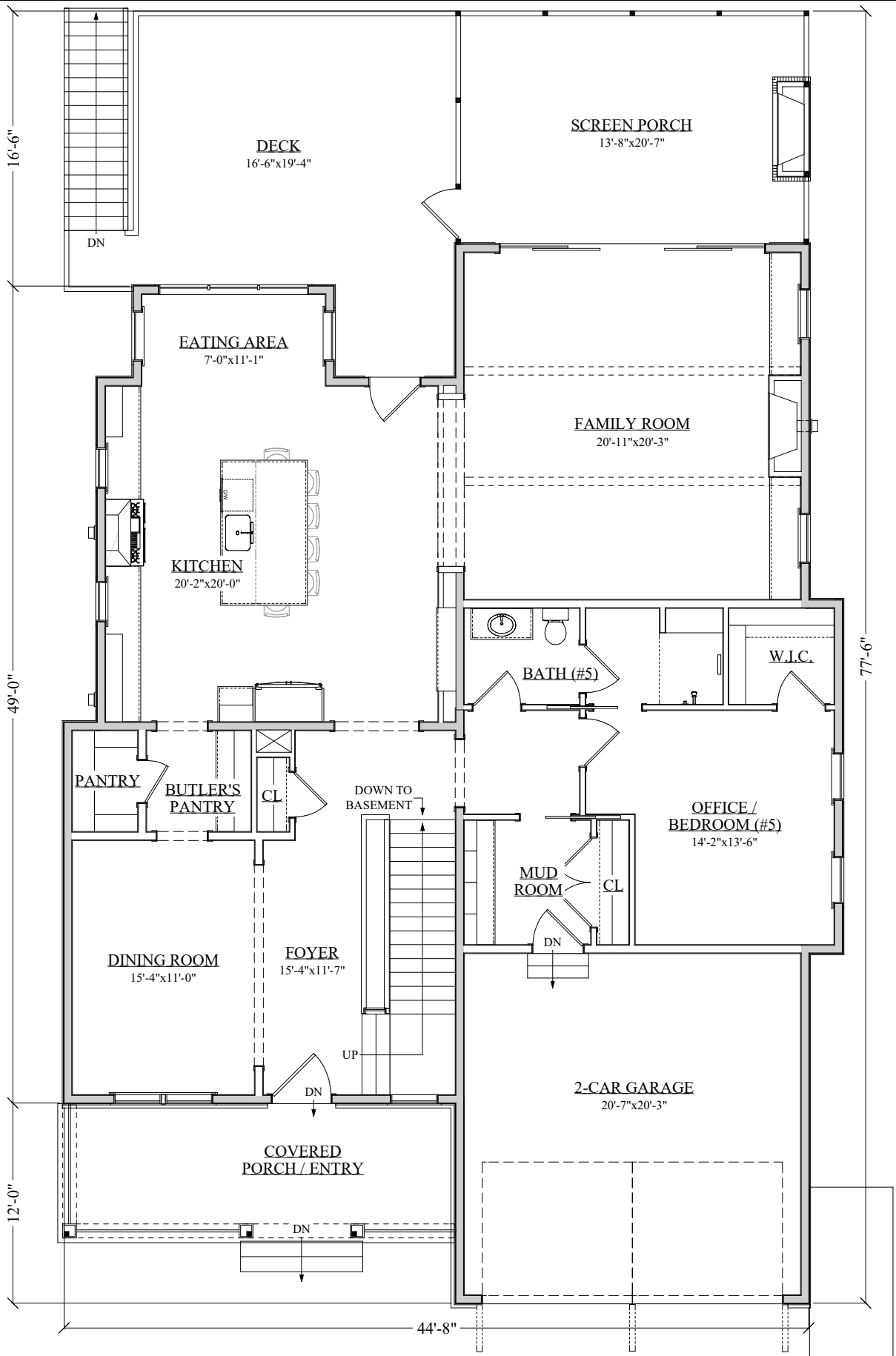
6 BED - 6.5 BATH - 6,150 SQ FT



1st Floor = 1,990 Sq Ft
2nd Floor = 2,350 Sq Ft
Basement = 1,810 Sq Ft

Covered Porch = 120 Sq Ft
Screen Porch = 230 Sq Ft
Deck = 370 Sq Ft
Utility = 130 Sq Ft
2-Car Garage = 440 Sq Ft

ZIMMERMANN HOMES
Z

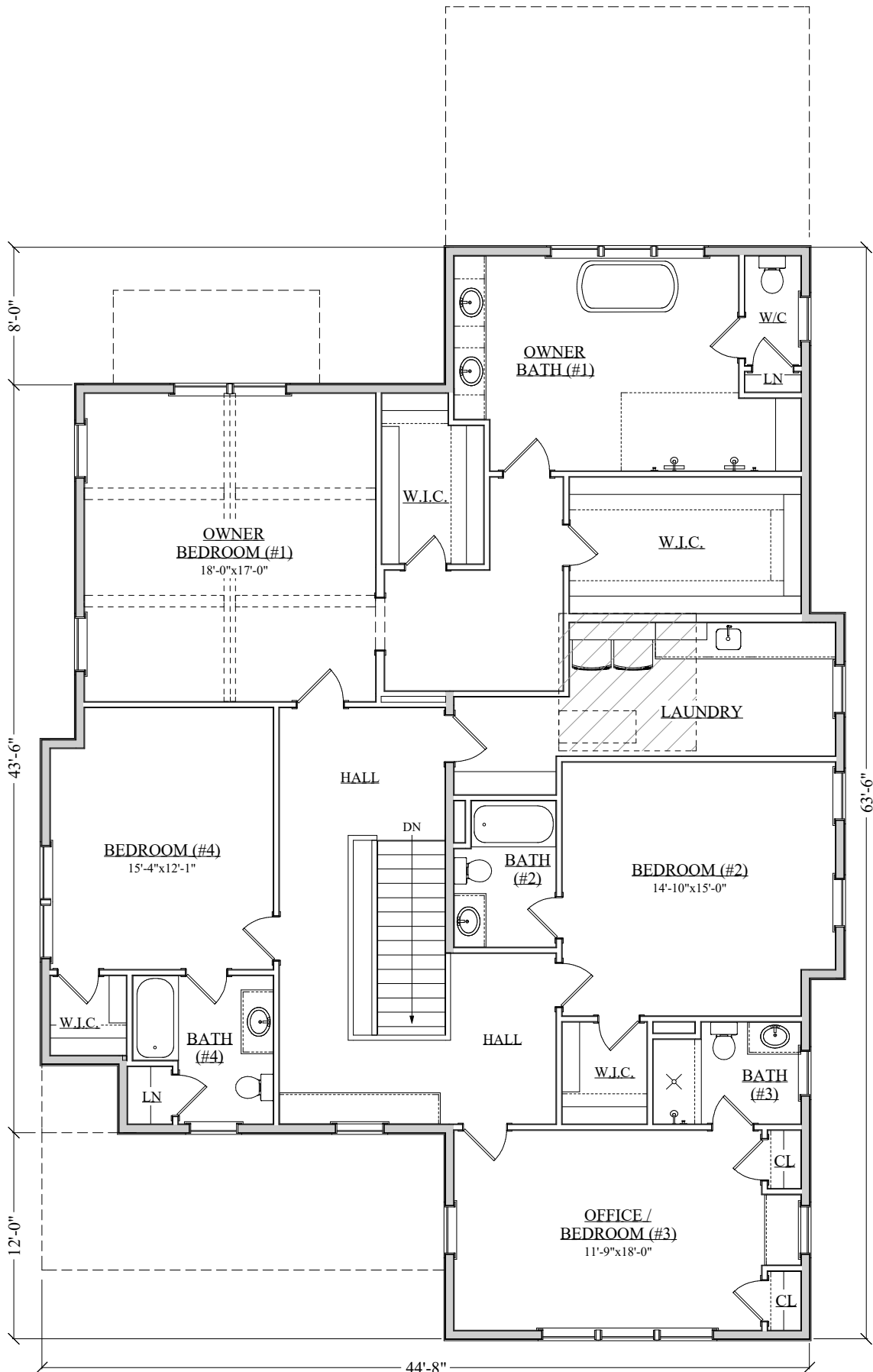


1st Floor Plan

Living Area = 1,990 Sq Ft

Room sizes shown are approx. finished dimensions, Depth x Width



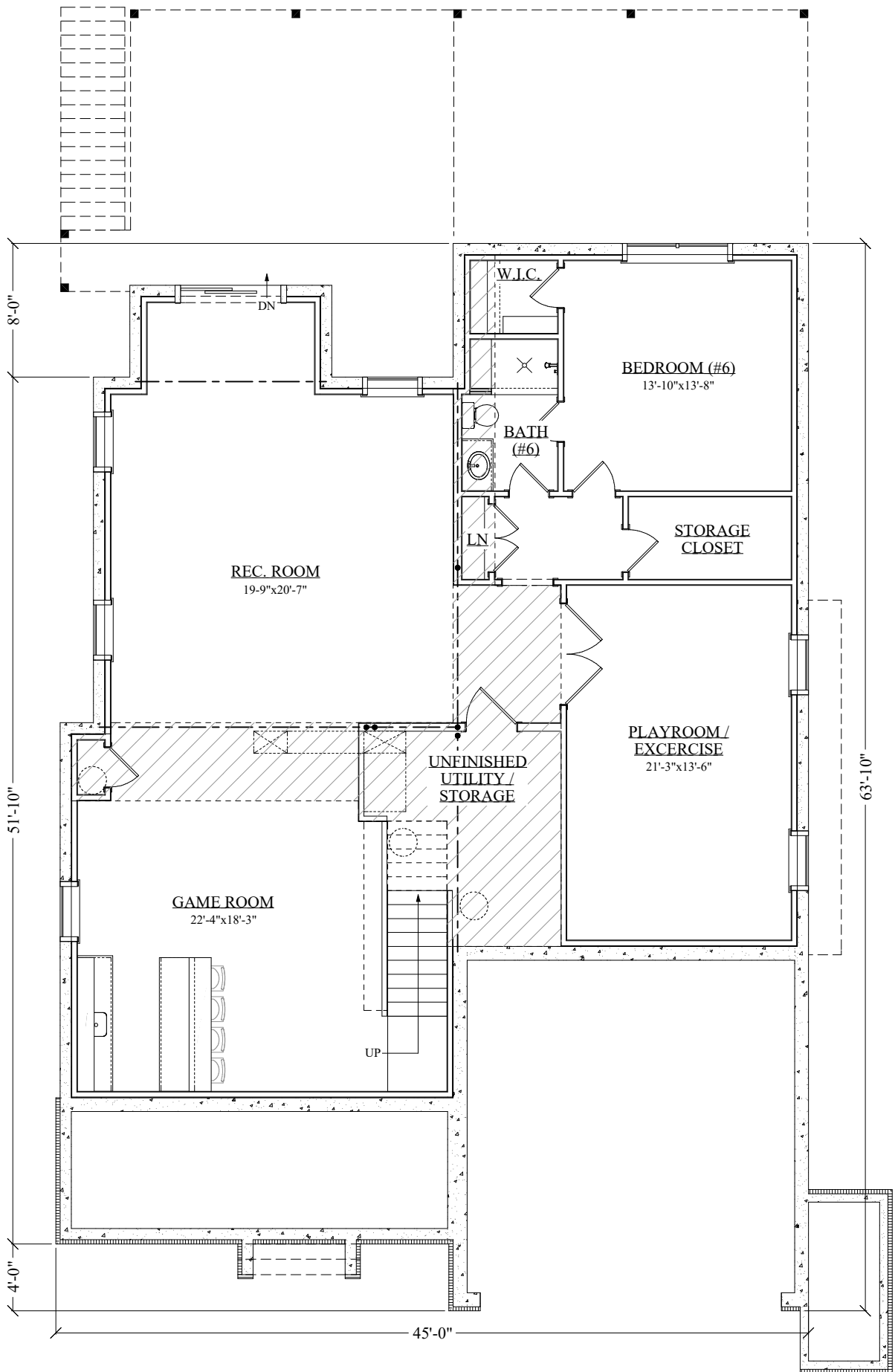


2nd Floor Plan

Living Area = 2,350 Sq Ft



Room sizes shown are approx. finished dimensions, Depth x Width



Basement Plan

Living Area = 1,810 Sq Ft



Room sizes shown are approx. finished dimensions, Depth x Width